



Our new residential project of 2 and 3 bedroom apartments  
located in Estepona, where you will enjoy stunning sea views.

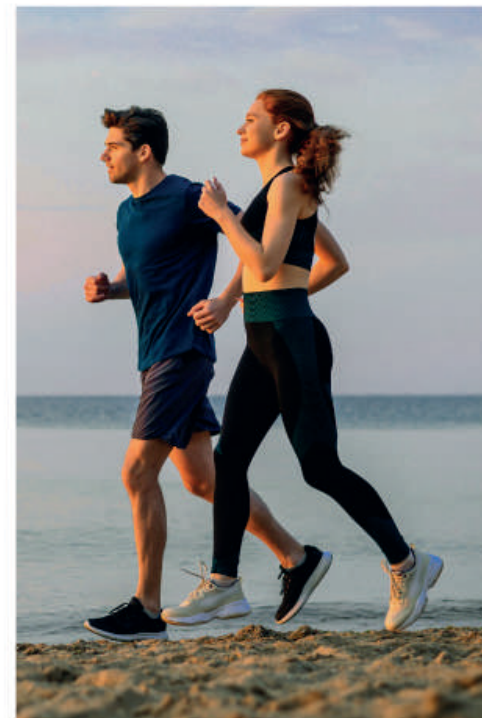
*Nuestro nuevo proyecto residencial con apartamentos de 2 y 3 dormitorios  
situado en Estepona desde donde disfrutar estupendas vistas al mar.*





Only 5 minutes by car from the heart of Estepona, 10 minutes from Puerto Banús and 20 minutes from Marbella. Surrounded by most prestigious golf courses in Europe, a complete range of restaurants and hotels, fantastic beaches and great shopping areas.

*A tan solo 5 minutos en coche del corazón de estepona, 10 minutos de Puerto Banús y 20 minutos de Marbella. En su entorno encontrarás los más prestigiosos campos de golf de Europa, un abanico amplio de restaurantes y hoteles para escoger al gusto, tiendas para realizar tus compras y playas fantásticas.*





Distances by car  
Distancias en automóvil

**DISTANCES BY CAR** *DISTANCIA EN COCHE*



Arroyo Vaquero Beach [ 1 km ]  
*Playa Arroyo Vaquero*



Azata Golf [ 2,8 km ]  
Estepona Golf [ 3,4 km ]  
Finca Cortesín [ 6,8 km ]



Estepona [ 5,1 km ]

**SERVICES** *SERVICIOS*



Supermarket  
Mercadona [ 300 m ]  
Aldi [ 400 m ]



Pharmacy [ 350 m ]  
Medical Center [ 1,7 km ]  
*Hospital de alta resolución de Estepona*



School [ 750 m ]  
*Colegio Juan XXIII*



A-7 [ 450 m ]



AP-7 [ 3,9 km ]

# 48 apartments

*48 viviendas*

The development is made up of 3 three-storey blocks with:

- Ground floor with garden and terraces
- First floor
- Penthouses with a solarium & large terraces

The residential has underground parking and storage rooms.

La promoción está formada por 3 bloques de 3 alturas con:

- Bajos con jardín y terraza
- Primera planta
- Áticos con solárium & terrazas amplias

El residencial cuenta con aparcamiento subterráneo y trasteros.















You will find:

- Spacious green areas ideal for resting and disconnecting from routine
- Communal swimming pool with an avant-garde design
- Chill Out area
- Gymnasium
- Coworking Space

Contará con:

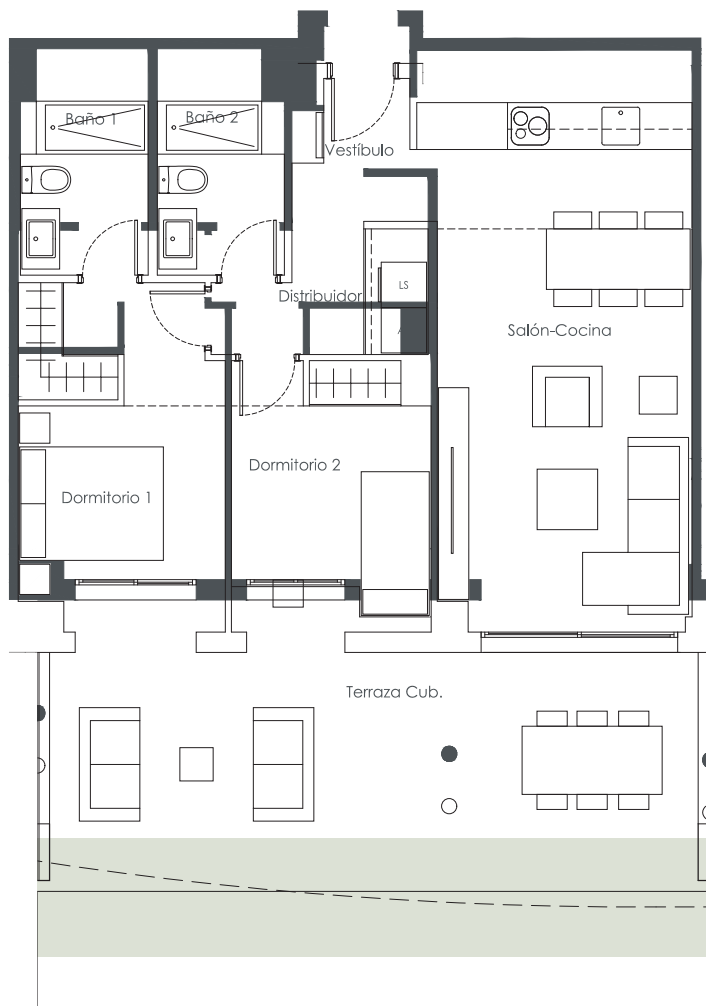
- *Amplias zonas verdes ideales para descansar y desconectar de la rutina*
- *Piscina comunitaria de diseño vanguardista*
- *Zona Chill Out*
- *Gimnasio*
- *Espacio Coworking*

# our homes

PLANOS







**74,99 m<sup>2</sup>**

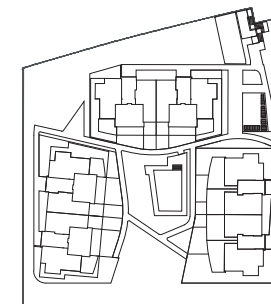
Useful surface of the apartment  
*Superficie útil de la vivienda*

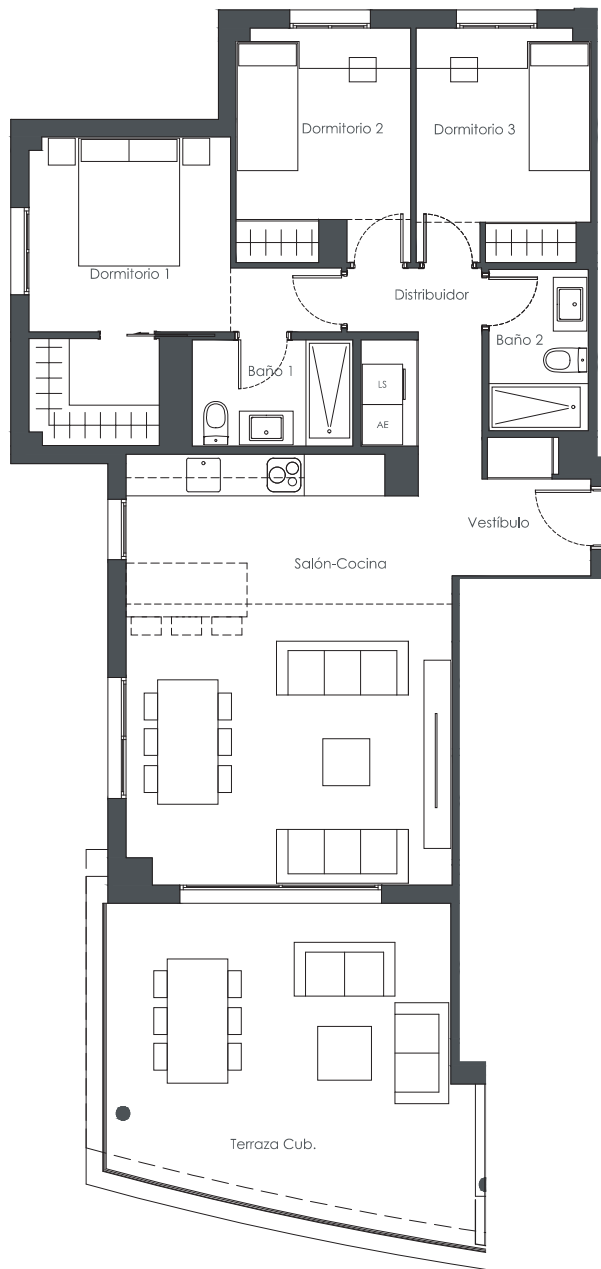
**94,14 m<sup>2</sup>**

Useful surface of the terraces  
*Superficie útil de las terrazas*

**100,71 m<sup>2</sup>**

Constructed surface of the apartment BOJA  
*Superficie construida de la vivienda BOJA*





**74,99 m<sup>2</sup>**

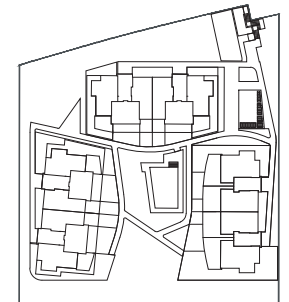
Useful surface of the apartment  
*Superficie útil de la vivienda*

**94,14 m<sup>2</sup>**

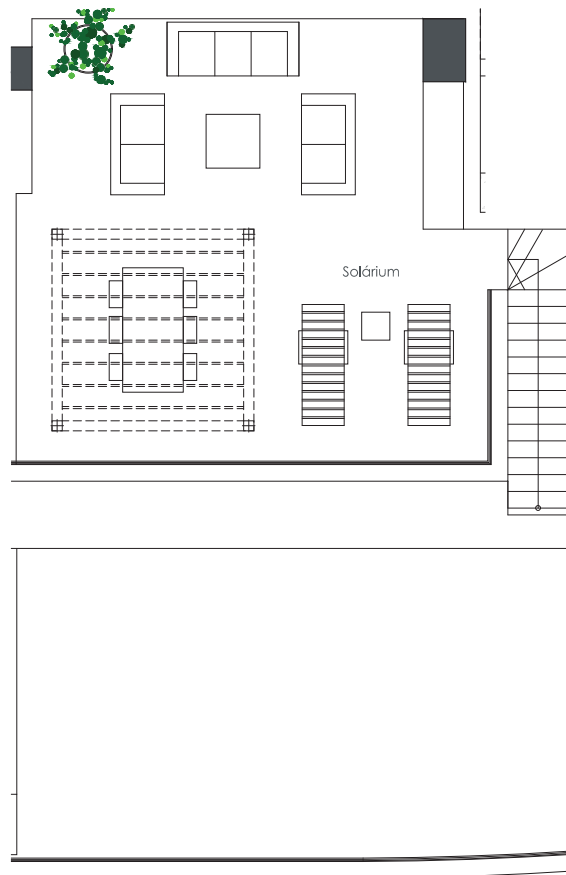
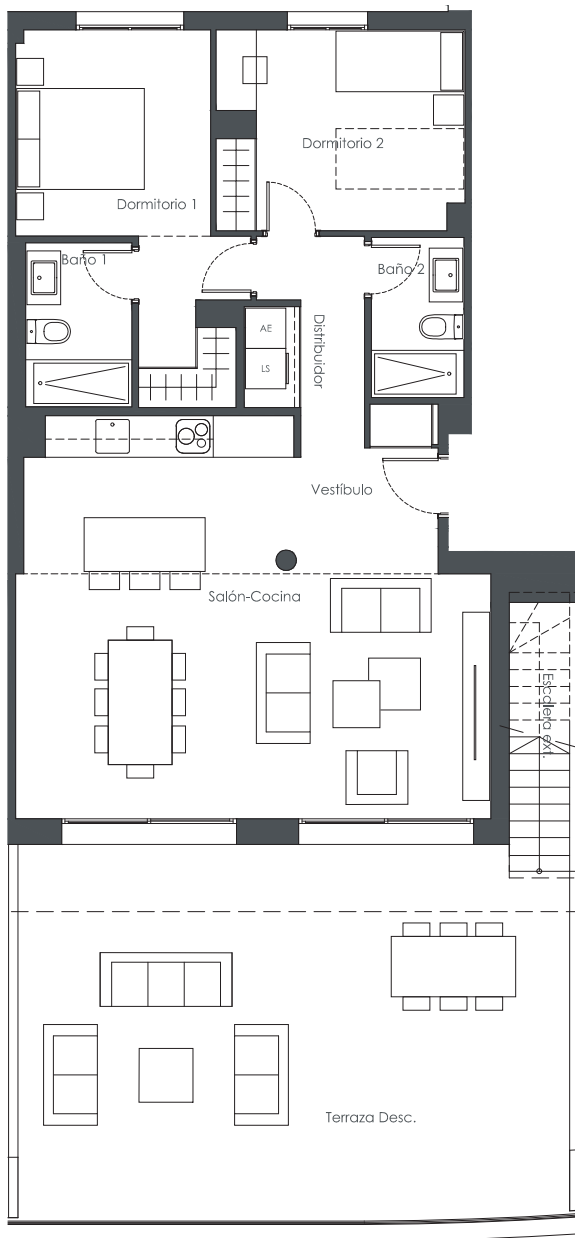
Useful surface of the terraces  
*Superficie útil de las terrazas*

**100,71 m<sup>2</sup>**

Constructed surface of the apartment BOJA  
*Superficie construida de la vivienda BOJA*



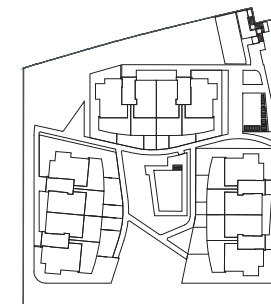




**74,99 m<sup>2</sup>**  
 Useful surface of the apartment  
*Superficie útil de la vivienda*

**94,14 m<sup>2</sup>**  
 Useful surface of the terraces  
*Superficie útil de las terrazas*

**100,71 m<sup>2</sup>**  
 Constructed surface of the apartment BOJA  
*Superficie construida de la vivienda BOJA*



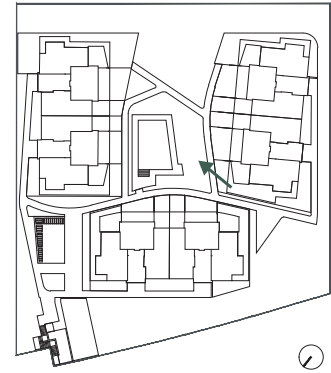
# the views

LAS VISTAS



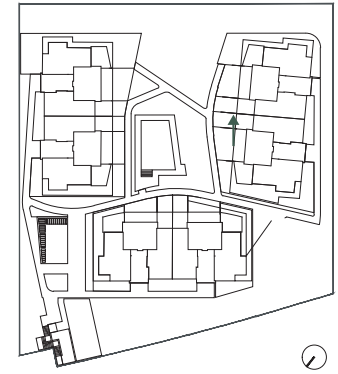


Photograph taken with a drone to appreciate the real views.



Ground floor | Planta baja

Photograph taken with a drone from Natura



Penthouse | Ático