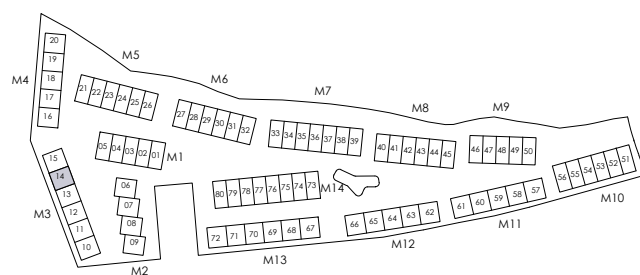
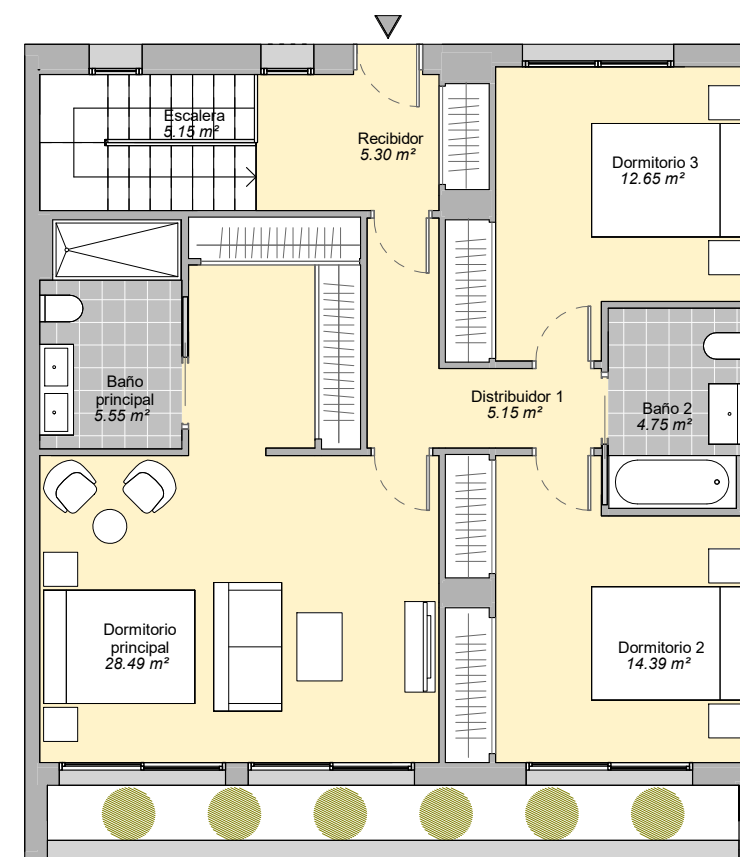
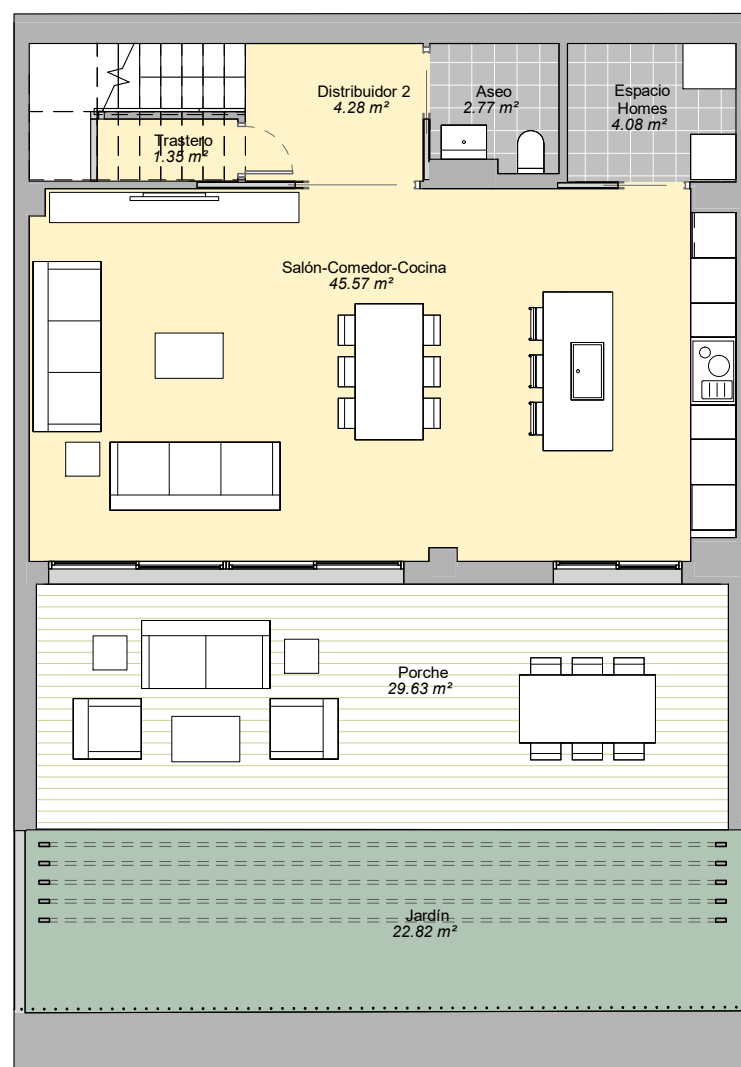


# MÓDULO 03 VIVIENDA 14

|                      | SUP. ÚTIL            | EXT/INT |
|----------------------|----------------------|---------|
| Recibidor            | 5.30 m <sup>2</sup>  | int.    |
| Salón-Comedor-Cocina | 45.57 m <sup>2</sup> | int.    |
| Dormitorio principal | 28.49 m <sup>2</sup> | int.    |
| Dormitorio 2         | 14.39 m <sup>2</sup> | int.    |
| Dormitorio 3         | 12.65 m <sup>2</sup> | int.    |
| Baño principal       | 5.55 m <sup>2</sup>  | int.    |
| Baño 2               | 4.75 m <sup>2</sup>  | int.    |
| Aseo                 | 2.77 m <sup>2</sup>  | int.    |
| Distribuidor 1       | 5.15 m <sup>2</sup>  | int.    |
| Distribuidor 2       | 4.28 m <sup>2</sup>  | int.    |
| Espacio Homes        | 4.08 m <sup>2</sup>  | int.    |
| Escalera             | 5.15 m <sup>2</sup>  | int.    |
| Trastero             | 1.35 m <sup>2</sup>  | int.    |
| Porche               | 29.63 m <sup>2</sup> | ext.    |
| Jardín               | 22.82 m <sup>2</sup> | ext.    |



|   |                       |
|---|-----------------------|
| Superficie Útil Interior                          | 139.48 m <sup>2</sup> |
| Superficie Útil Exterior                          | 52.45 m <sup>2</sup>  |
| Superficie Construida con p.p. zc.                | 169.50 m <sup>2</sup> |
| Superficie Útil s/Decreto 218/2005 del BOJA       | 153.43 m <sup>2</sup> |
| Superficie Construida s/Decreto 218/2005 del BOJA | 185.51 m <sup>2</sup> |

V.03 - FEBRERO 2022  
ESCALA GRÁFICA

0 2 4m

